



Noise Monitoring Result

Day Time (0700 - 1900hrs on normal weekdays)

Location: M1a - Harbour Road Sports Centre

Date	Time	Weather	Measurement Noise Level			Baseline Level	Construction Noise Level	Limit Level
			Leq	L10	L90	Leq	Leq	Leq
Unit: dB(A), (30-min)								
4/2/2014	14:52	Fine	71.2	74.0	64.5	72	71	75
10/2/2014	15:30	Cloudy	71.3	73.5	66.5	72	71	75
18/2/2014	13:22	Fine	72.0	75.0	66.5	72	72	75
24/2/2014	16:25	Fine	72.2	74.5	68.0	72	72	75

Location: M2b - Noon-day gun area

Date	Time	Weather	Measurement Noise Level			Baseline Level	Construction Noise Level	Limit Level
			Leq	L10	L90	Leq	Leq	Leq
Unit: dB(A), (30-min)								
4/2/2014	13:54	Fine	67.1	68.5	65.0	68	67	75
10/2/2014	16:15	Cloudy	70.4	72.5	67.5	68	67	75
18/2/2014	14:06	Fine	69.9	71.0	67.5	68	66	75
25/2/2014	13:15	Fine	69.6	72.0	67.5	68	65	75

Location: M3a - Tung Lo Wan Fire Station

Date	Time	Weather	Measurement Noise Level			Baseline Level	Construction Noise Level	Limit Level
			Leq	L10	L90	Leq	Leq	Leq
Unit: dB(A), (30-min)								
4/2/2014	13:03	Fine	64.6	65.5	61.5	69	65	75
13/2/2014	13:48	Cloudy	68.8	71.0	65.5	69	69	75
18/2/2014	14:48	Fine	71.8	74.0	67.5	69	69	75
25/2/2014	14:05	Fine	68.0	70.5	64.5	69	68	75

Location: M4b - Victoria Centre

Date	Time	Weather	Measurement Noise Level			Baseline Noise Level	Construction Noise Level	Limit Level
			Leq	L10	L90	Leq	Leq	Leq
Unit: dB(A), (30min)								
4/2/2014	11:16	Fine	68.1	70.0	65.0	67	60	75
13/2/2014	14:30	Cloudy	68.3	69.5	66.0	67	61	75
18/2/2014	15:31	Fine	70.1	71.5	67.5	67	67	75
25/2/2014	14:45	Fine	68.4	70.0	66.0	67	62	75

Location: M5b - City Garden

Date	Time	Weather	Measurement Noise Level			Baseline Level	Construction Noise Level	Limit Level
			Leq	L10	L90	Leq	Leq	Leq
Unit: dB(A), (30min)								
4/2/2014	9:28	Fine	67.3	68.5	65.0	68	67	75
13/2/2014	16:35	Cloudy	68.5	69.5	67.0	68	59	75
18/2/2014	16:18	Fine	67.5	68.5	65.5	68	68	75
25/2/2014	15:26	Fine	67.2	68.5	65.5	68	67	75

Location: M6 - HK Baptist Church Henrietta Secondary School

Date	Time	Weather	Measurement Noise Level			Baseline Level	Construction Noise Level	Limit Level
			Leq	L10	L90	Leq	Leq	Leq
Unit: dB(A), (30-min)								
4/2/2014	10:24	Fine	72.6	73.5	70.5	71	68	70
13/2/2014	15:22	Cloudy	75.7	76.5	74.0	71	74	65
20/2/2014	9:39	Fine	72.3	74.0	70.0	71	67	65
25/2/2014	16:05	Fine	73.9	75.0	72.0	71	71	70



Noise Monitoring Result

Day Time (0700 - 1900hrs on normal weekdays)

Location: M7e - International Finance Centre (Eastern End of Podium) (Reference Station)

Date	Time	Weather	Measurement Noise Level			Baseline Level	Construction Noise Level	Limit Level
			Leq	L10	L90	Leq	Leq	Leq
Unit: dB(A), (30-min)								
5/2/2014	14:06	Fine	67.2	69.0	64.0	67	57	N/A
14/2/2014	10:32	Fine	67.7	69.5	65.0	67	60	N/A
18/2/2014	10:19	Fine	69.4	70.4	64.5	67	66	N/A
24/2/2014	15:35	Fine	68.2	70.0	64.5	67	63	N/A

Location: M7w - International Finance Centre (Western End of Podium)

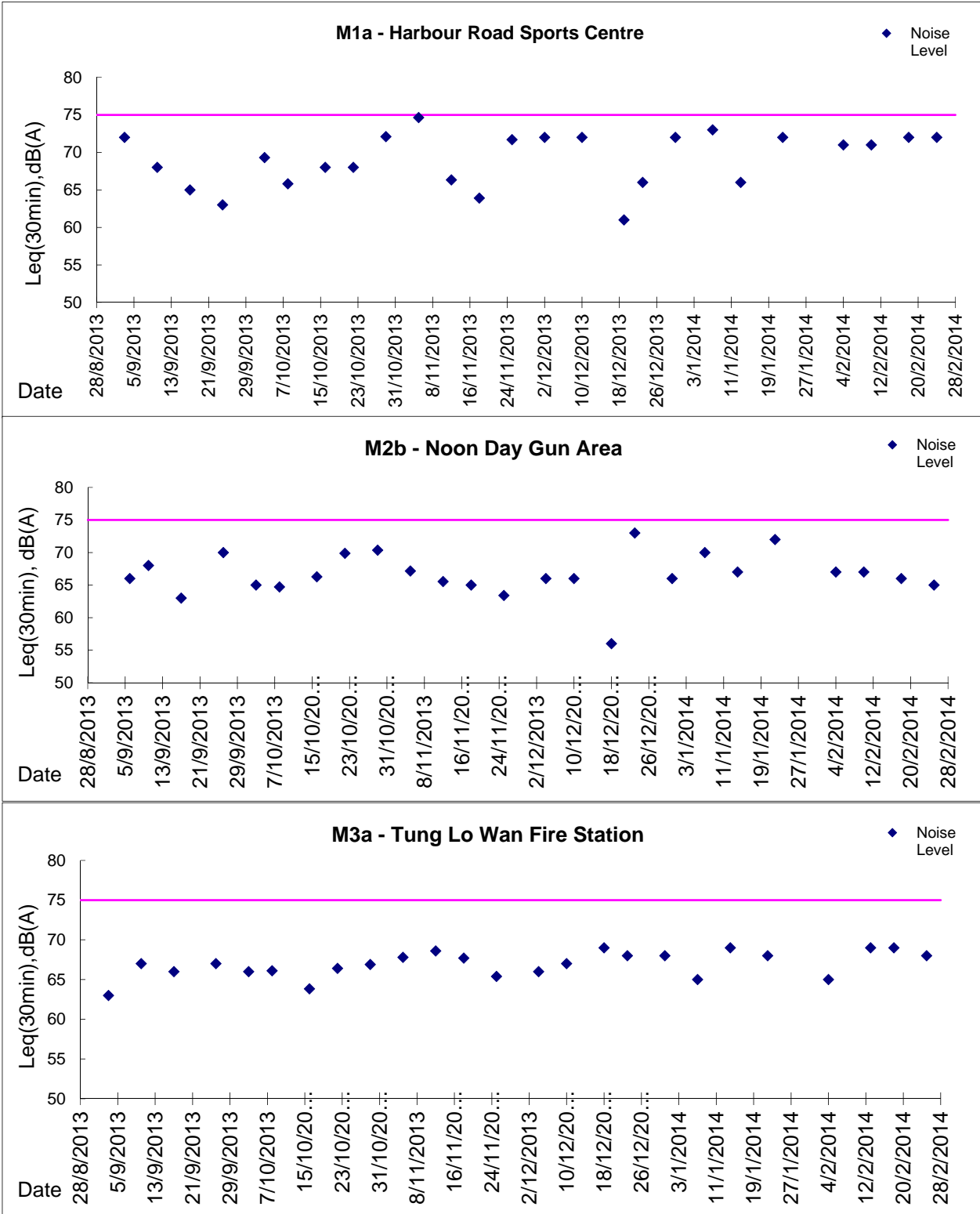
Date	Time	Weather	Measurement Noise Level			Baseline Level	Construction Noise Level	Limit Level
			Leq	L10	L90	Leq	Leq	Leq
Unit: dB(A), (30-min)								
5/2/2014	14:45	Fine	65.7	67.5	61.5	69	66	75
14/2/2014	9:55	Fine	66.2	68.0	63.5	69	66	75
18/2/2014	9:39	Fine	66.9	69.5	63.5	69	67	75
24/2/2014	15:00	Fine	67.9	70.5	63.5	69	68	75

Location: M8 - City Hall

Date	Time	Weather	Measurement Noise Level			Baseline Level	Construction Noise Level	Limit Level
			Leq	L10	L90	Leq	Leq	Leq
Unit: dB(A), (30-min)								
4/2/2014	16:03	Fine	60.0	62.5	56.0	64	60	70
10/2/2014	15:45	Cloudy	60.4	62.5	56.5	64	60	70
18/2/2014	11:09	Fine	62.0	65.0	57.0	64	62	70
24/2/2014	9:00	Fine	60.2	62.5	56.5	64	60	70

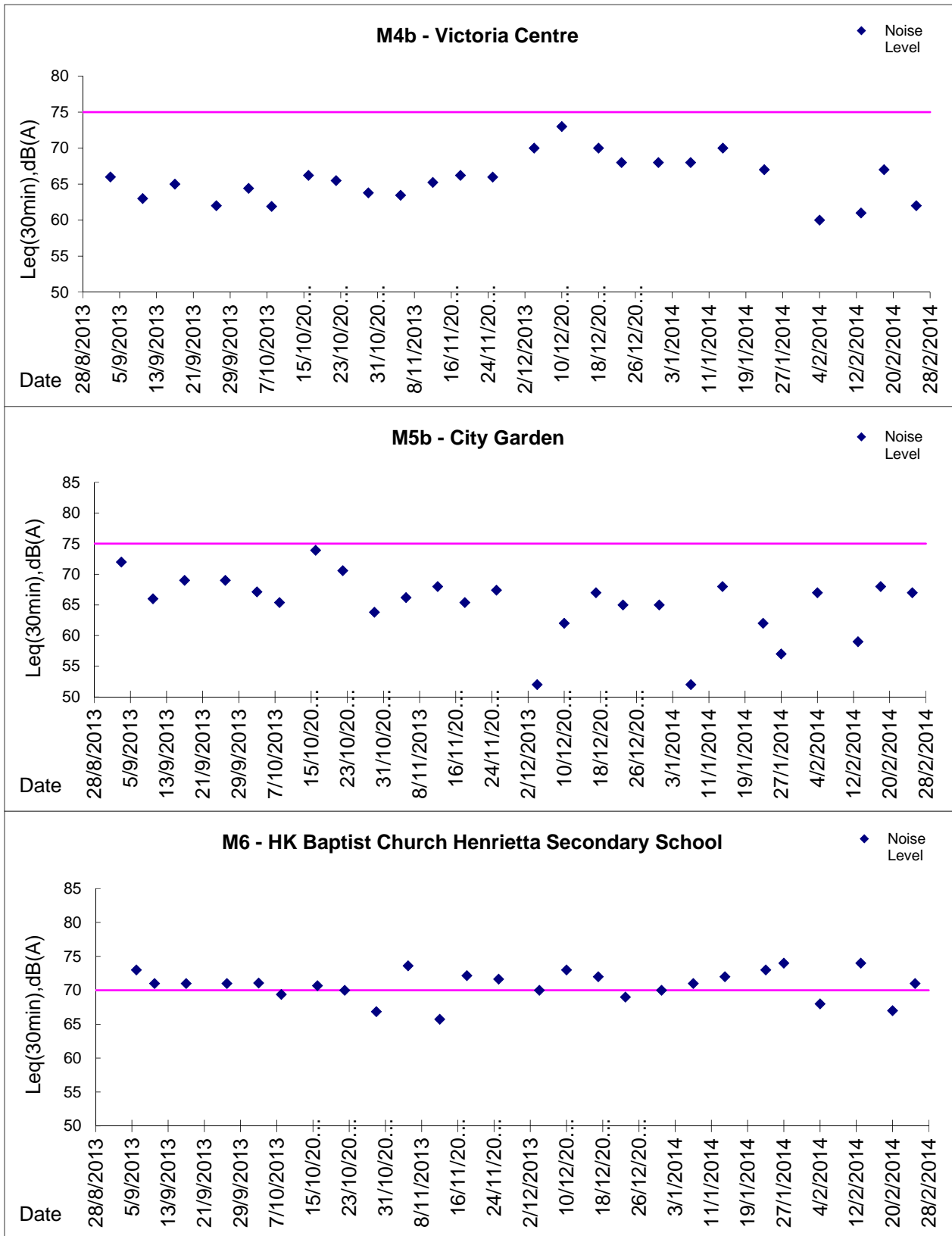


Graphic Presentation of Noise Monitoring Result
Day Time (0700 - 1900hrs on normal weekdays)





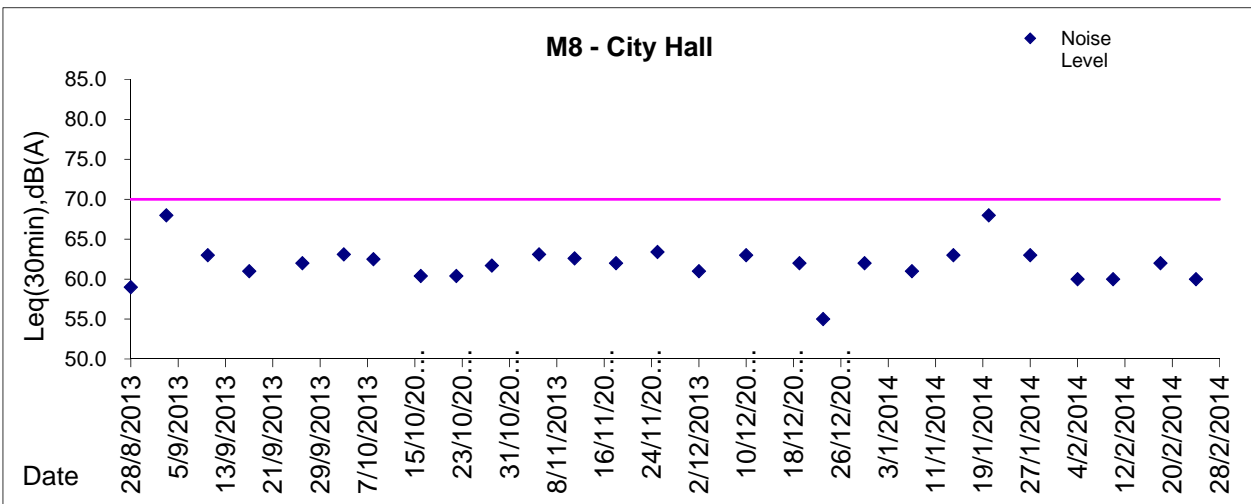
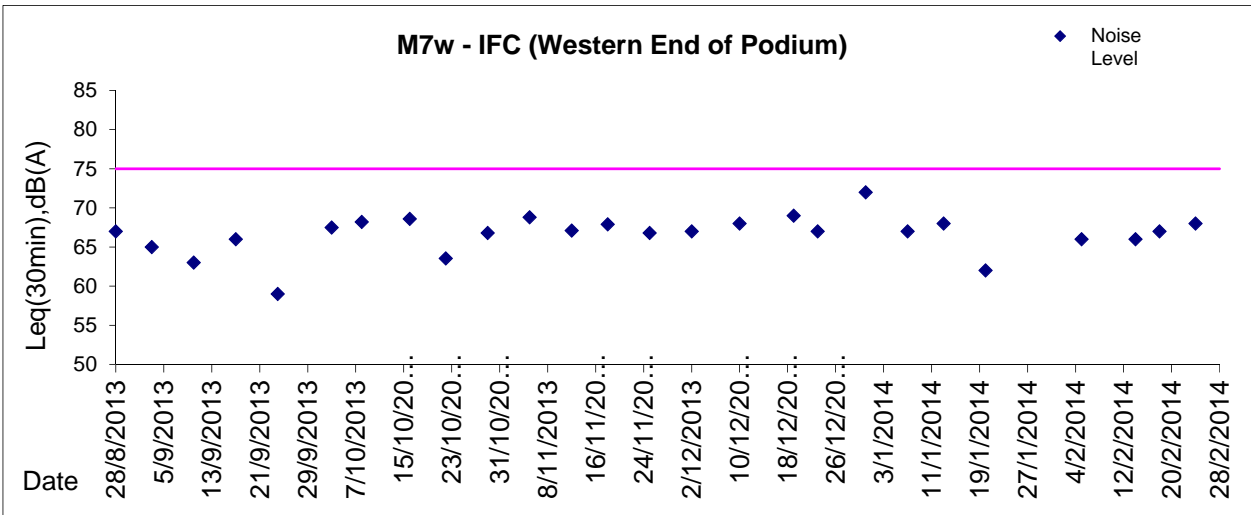
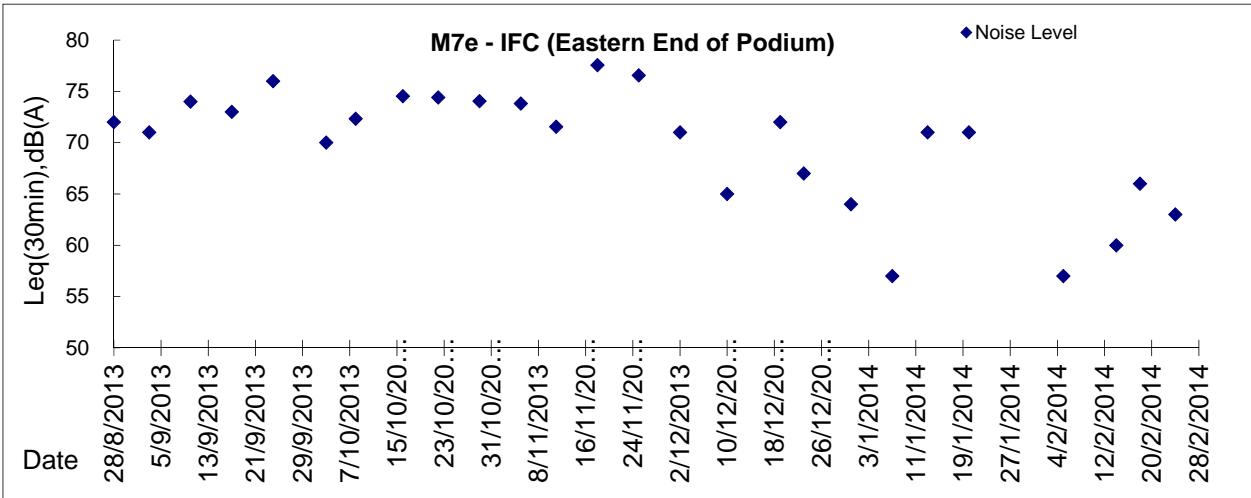
Graphic Presentation of Noise Monitoring Result
Day Time (0700 - 1900hrs on normal weekdays)





Graphic Presentation of Noise Monitoring Result

Day Time (0700 - 1900hrs on normal weekdays)



* Remark: M7e - IFC (Eastern End of Podium) is a reference monitoring station